

March 2023

SPRINGFIELD VILLAGE

**NHS**  
South West London and  
St George's Mental Health  
NHS Trust

# Springfield Messenger

A community update for local people on the development of Springfield Village



**Welcome to the latest edition of the Springfield Messenger bringing you the latest updates from Springfield Village.**

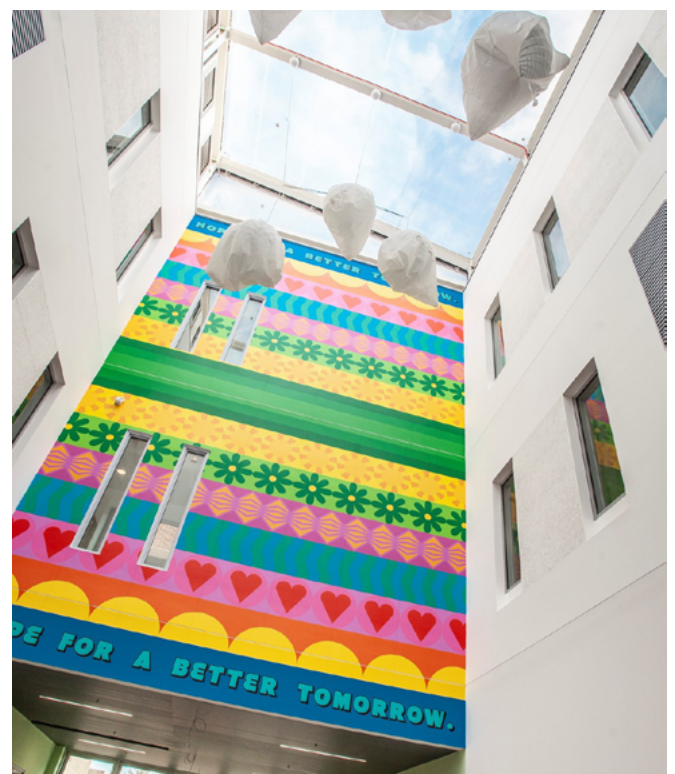
I am delighted to share the news that as part of a £150m investment in local services, the new Trinity building at Springfield Hospital has now opened to patients.

Over the last few months over 500 staff and patients have moved into the new facilities, which now serve as the new headquarters for our Trust.

Trinity is home to a range of outpatient services for adults and young people and four wards, providing care for residents across Wandsworth, Merton, Sutton, Kingston and Richmond.

As you can see in our [video tour](#) the building provides a fantastic new environment for patients and service users - not least thanks to the award-winning garden courtyards and beautiful artworks that feature throughout.

In 2020 we commissioned one of the largest art projects ever undertaken in the NHS. Arts and mental health charity Hospital Rooms conducted over 120 workshops with staff and service users over 2021, which informed the creation of 20 world-class artworks, now installed across wards and in our main atriums. ▶



These have been designed to positively transform how patients experience mental health settings, creating bright, vibrant spaces that instill a sense of hope and warmth. This fantastic project has already been highlighted in the New York Times as an example of innovative emerging practice in mental health hospitals.

It is an exciting time of change for everyone connected with our Trust, and the changes at Springfield mark the start of an important journey to transform mental health services in South West London.

Springfield Village continues to open around us as our new stigma-breaking landscape develops, with hundreds of new homes, shops, a public square and the first parts of our 32-acre park opening over 2023. When you next visit Springfield Village, you'll notice that more residents have moved into the new homes appearing on site.

Later this year we open the new Shaftesbury building at Springfield. And after that, works are scheduled to begin on a new outpatient facility at Barnes Hospital in Richmond and new wards at Tolworth Hospital in Kingston, pending final approvals.

Our thanks to everyone who has supported us to bring our vision for Trinity and Springfield to life - we look forward to welcoming you into our new look headquarters this year through the tours we have planned, community events or simply by being good neighbours!

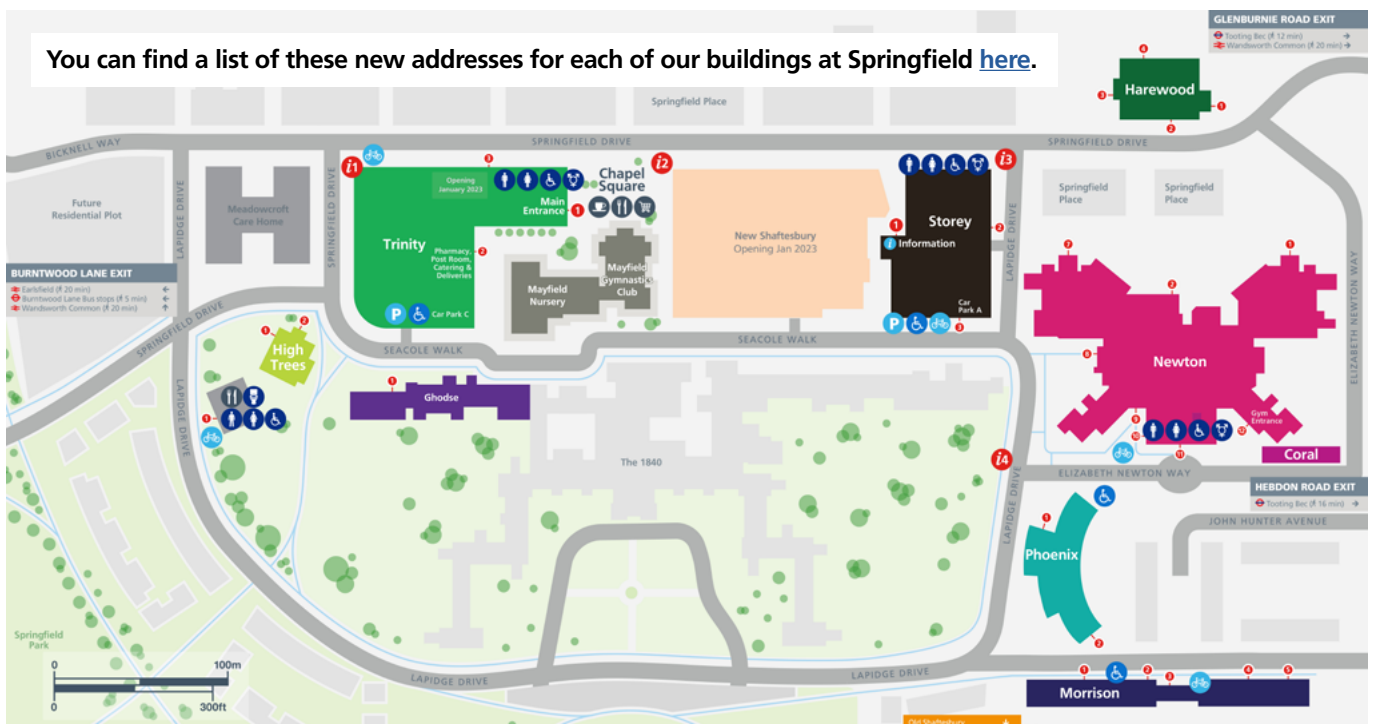


Best wishes,  
**Ian Garlington**, Integrated Programme Director

## All change at Springfield!

Springfield Hospital now looks and feels very different with changes to roads and facilities. Entrances onto the estate remain at Glenburnie Road and Burntwood Lane. The new layout, including the changes to road names and buildings, are detailed in the map below.

**Our Trust address has also changed:**  
South West London and St George's Mental Health NHS Trust  
Trinity Building, Springfield University Hospital  
15 Springfield Drive  
London, SW17 0YF



## STEP update on the delivery of Springfield Village

Master developer STEP is excited to see Springfield Village come to life with the opening of the first new mental health building and the Meadowcroft care home. Over 150 households are now enjoying their new homes and the whole Springfield Village community is looking forward to exploring the park in the summer.

### The Meadowcroft opens doors to residents

The Meadowcroft Care Home opened the doors to its first residents earlier last month.

A purpose-built home featuring modern facilities, The Meadowcroft is extending and upgrading the provision of care home beds locally, and delivering additional spaces for residential, nursing and dementia care in SW17.

Part of Greensleeves Care, a not-for-profit care organisation, the home delivers high quality residential, dementia and nursing care.

Residents and staff transferred across from their former care home, Ronald Gibson House, which is set to close in spring 2023, and were warmly welcomed to their new home, with a celebratory dinner and welcome gifts.

Iris, a resident at the home, said of her new surroundings:

*"I had been at Ronald Gibson House for 8 months, so I already know the nurses and staff well. I was a bit dubious about the move at first, but I am settling in well. It helps that I know everyone, and Victor (manager) is a good soul!"*



The home is managed by Victor Njoku, who has already led his close-knit team to establish an excellent reputation in the local area.

Victor said of the new home:

*"I am thrilled that we are able to continue to operate within this brand-new space. Residents are settling in well and enjoying their new surroundings. We are already welcoming new residents to The Meadowcroft and the new facilities will enable us to provide excellent care to more older people in the local community and beyond."*

To enquire about living at The Meadowcroft, call Andy on **0208 154 5337**.

### Sir Robert McAlpine (Main Contractor for the Hospitals, Park and Infrastructure)

#### Hospital Buildings:

At the end of 2022, the Trinity building was completed and successfully handed over to the Trust. The Shaftesbury Hospital is nearing completion with final fit out works and commissioning works ongoing to ensure a smooth and complete handover later in the year

#### Infrastructure and Parkland:

The pavilion building in Park area A, which will be home to a new café when it opens next year is progressing well with the ground floor slab in place and the fitout beginning in April. Earth movement for Park area A has commenced and will continue into the spring.

Highways works to realign and upgrade the Burntwood Lane Junction and Springfield Drive is progressing. Some road closures will be necessary at the junction of Burntwood Lane to complete these works, with the new entrance opening in June 2023.

### City and Country – The 1840 (Plots R & S)

Works are continuing in the 1840 listed buildings, with 43 apartments now occupied. ►

**Phase 1** works include: decoration to apartments; the removal of scaffolding from remaining blocks; external finishes and hard and soft landscaping.

**Phase 2** works are focusing on: demolition and structural activity; roofing works; masonry repairs and the commencement of the internal fit-out.



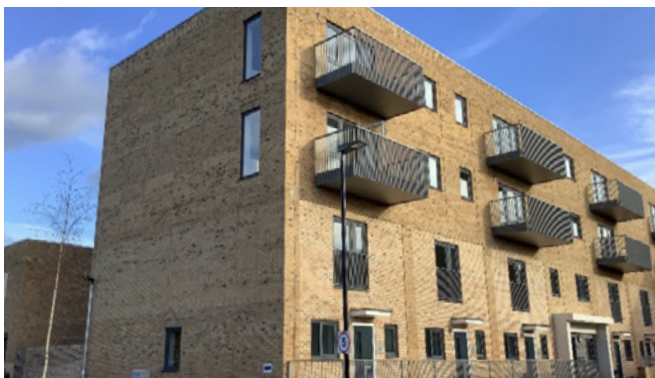
Internal CGI of the Kitchen Yard.

**Barratt London – Springfield Place (Plots B-E and L&M)**

Springfield Place now has a total of 120 new households, with blocks L and M fully occupied and block B1 partially occupied (houses and duplex units). In March handovers to the remaining plots will take place.

Over the next quarter Barratt will be undertaking the following works:

- Blocks B2, C1 and C2 second fix works, decorations and internal snagging
- Blocks E1 and E2 – External façade works ongoing with the internal fit out to E1 parcel
- Groundworks/landscaping to E1 parcel blocks/houses
- Groundworks commenced to D1a block



Barratt London Block B1

**London Square – Plots P, Q, F and G**

London Square submitted their detailed planning application at the end of 2022 (London Borough of Wandsworth application number: 2023/0123). Following officer feedback they have been refining and enhancing their design. The reserve matters planning application should be taken to the London Borough of Wandsworth’s Planning Applications Committee in April 2023. Targeting a start on site in summer 2023.

**Site working hours**

Working hours on the site are:

- Monday - Friday: 08:00 - 18:00
- Saturday: 08:00 - 13:00

Sir Robert McAlpine have additional approved working hours in place on Monday - Friday between 7am-8am, 6pm - 7pm, and from 2pm-4pm on Saturdays. No noisy works will be undertaken within these shoulder hours.

**Any questions about construction?**

STEP works closely with the Springfield Village construction and development partners to keep you informed. If you have any questions on upcoming works or any suggestions on how we can improve how we work, please let us know of any comments you may have by contacting.

STEP e-mail: [community@springfieldvillage.info](mailto:community@springfieldvillage.info)  
 Visit: [www.springfieldvillage.info/get-in-touch](http://www.springfieldvillage.info/get-in-touch)



## Community Update

As well as new facilities, we are building a new community with mental health at its heart. As such, we are designing a community leaflet which we will share with the residents who live close to them and how to access services.



We soon hope to be able to offer Messengers readers an introductory mental health first aid course for residents and staff to:

- Raise awareness of common mental health issues and support mental health literacy in the community
- Raise awareness of the Trust's services and what it means to live near to a modern mental health hospital in 2023
- Empower people to signpost to local mental health support
- Enable people to develop skills to support positive wellbeing

- Create a community where mental health and wellbeing is a priority
- Strengthening relationships between staff and residents on jointly attended courses

If you would like to register an interest in this free training please email [david.moore@swlstg.nhs.uk](mailto:david.moore@swlstg.nhs.uk)

### South London Listens

We also continue to make great strides on our partnership programme South London Listens, which is tackling the long term psychological fall out from the Covid-19 pandemic.



Following our [Accountability Assembly](#) back in November we have now published our [Impact Report](#), which sets out the significant progress that has been made by all partners in delivering on the pledges that we made to our communities.

This includes the delivery of nearly 20 [Be Well Hubs](#) across the boroughs we serve in South West London, with plans to establish nearly 10 more over the coming year.

These hubs provide safe spaces for local people to turn to when they feel their mental health is low or simply when they need to feel more connected to their local community.

## Any questions? Contact us

To find out more information on the investments we are making in new mental health services across South West London, please contact us:

Email: [estatemodernisation@swlstg.nhs.uk](mailto:estatemodernisation@swlstg.nhs.uk)

Twitter: [@SWLSTG](https://twitter.com/SWLSTG)

Or visit our website: [www.swlstg.nhs.uk/estate-modernisation](http://www.swlstg.nhs.uk/estate-modernisation)

If you would like to receive a printed version of this newsletter or would like to become a distributor for your neighbours, please email [estatemodernisation@swlstg.nhs.uk](mailto:estatemodernisation@swlstg.nhs.uk)

---

## Our partners

