

March 2022

SPRINGFIELD VILLAGE

NHS
South West London and
St George's Mental Health
NHS Trust



Springfield Messenger

A community update for local people on the development of Springfield Village



Welcome to the winter edition of the Springfield Messenger, bringing you the latest updates from Springfield Village.

There are now just seven months until our new Shaftesbury and Trinity buildings are open and operational.

It is thrilling to see so many years of working coming together and we are excited to be able to share some of the first areas of the new Springfield Village with you later this year.

Works are continuing to finalise the facades and fit out of our new healthcare facilities, and the residential developments and new care home continue to come on at pace alongside the wider site infrastructure.



The first area of our new 32-acre park is starting to look more like a park every day and remains on track to open in the summer of 2023.

In case you missed it, our construction partners gave an online update on developments across the site - you can watch this again via our [YouTube channel](#).

Read on to find out more about how works are progressing onsite, meet some of the team and find out how you can get involved in our community art programme with charity Hospital Rooms.

Take care and stay safe.

Ian Garlington,
Integrated Programme Director

Meet the team

The faces behind the programme

Sarah Adams: South West London and St George's Mental Health NHS Trust

Title: Clinical and Operational Delivery Project Lead



As a nurse who has worked in the Trust now for 11 years, it has been an incredible experience to join the Estate Modernisation Team and work as the Clinical and Operational Delivery Project Lead for the last 2 years.

It has been amazing to see how the early designs from when I first started at the Trust have turned into the buildings that will be opening later this year.

It has been an absolute privilege to work with our service users, carers and staff to ensure we have the very best new buildings we can, and I'm very proud of what we have achieved.

Paul Jones: South West London and St George's Mental Health NHS Trust

Title: Estate Modernisation Programme Project Manager



Having worked for the Trust for 25 years, and as the Estate Modernisation Project Manager for the last 3 years, it's extremely exciting to these buildings finally nearing completion.

It is an incredible project to have been part of, and I can't wait to see our service users and staff move in and enjoy what we have all worked so hard to build

Carl Wilson: Lawrence Baker

Title: Project Manager



I am the project manager for Lawrence Baker building the new care home within Springfield hospital.

I am responsible for the day-to-day delivery of this project which will eventually be operated by Greensleeves and is currently on target to open in early Autumn.

This project has been challenging due to the lack of space on the plot, there have been many logistic issues but with the collaboration from SRM and the Hospital Trust these have been very manageable. We are looking forward to the coming months pushing the project to be completed in the summer.

Ciara Patterson: Barratt London

Title: Trainee Assistant Site Manager



I am the new Trainee Assistant Site Manager at Springfield Place for Barratt London. I am responsible for the daily supervision of site activity where I am ensuring we are keeping people safe. I am very excited to be a part of this project and look forward to continue seeing its progression

Olivia Hack: Sir Robert McAlpine

Title: Sustainability Manager



I am thrilled to have taken over the role of Sustainability Manager on such a meaningful and successful project which will benefit so many.

I visited the site at very early stages of development and so to now be involved and responsible for the environmental and social aspects of the project is both exciting and challenging.

Savvas Goulas: Sir Robert McAlpine

Title: Section Engineer



I've been on this project for 3 years and feel proud to be part of a team that has seen the project develop to where we are now.

I cannot wait to complete works in the park and open London's largest park since the Olympics to the general public.

I hope they will enjoy it as much as I have building it.

- Construction of the external walls continues on plots L and M. Block M is now at roof level with Block L to follow within the next month.
- Construction of the external walls continues on plots E1 and E2 have commenced.

City & Country (heritage developer, R and S)

- Phase two of the works at The 1840 begins in February 2022.
- Externally roofing works are ongoing.
- Masonry repairs, cleaning and rebuilding continues in the gardens and on the boundary walls.
- The installation of new and refurbished cast iron and crittall style windows continues.
- Internally, fixings and decorations to communal areas in the main towers is progressing.
- Asbestos removal and soft stripping for phase two continues.

Lawrence Baker (New care home facility, Plot H)

- Installation of roof covering continues across large areas of the building.
- Installation of the windows is now beginning.
- All internal screeding is complete and plasterboarding commences.
- Internal mechanical and electrical works continue including installation of air conditioning and ventilation extraction for the kitchen and laundry areas.

Working Hours

The current approved working hours are:

- Monday to Friday: 7am to 7pm (hospitals and infrastructure)
- Monday to Friday: 8am to 6pm (all other works)
- Saturdays: 8am to 4pm (hospitals and infrastructure)
- Saturdays: 8am to 1pm (all other works)
- Sundays and Bank Holidays: No works without prior permission.

The extended hours approved by Wandsworth Council will help ease congestion on trains and public transport, ensuring the safety of those who travel to work.

To minimise impact on our neighbours, work over the additional hours will be limited to internal trades with minimised noisy activity externally.

Any questions about construction?

We work closely with our partner Sir Robert McAlpine, housing developers Barratt London and City & Country; and care home contractor Lawrence Baker to keep you informed. If you have any questions on upcoming works or any suggestions on how we can improve how we work, please let us know of any comments you may have by contacting.

STEP e-mail: community@springfieldvillage.info

Visit: www.springfieldvillage.info/get-in-touch



Spotlight on Springfield Park

With the first part of Springfield Park (Area B) opening in Summer 2023 followed by Area A in Spring 2024, we wanted to share some more details about the new facilities being provided for us all to enjoy.

Please see the images below showing what you can expect to see:

Springfield Park

1. Pavilion Cafe & public WCs
 2. Main play areas
 3. Youth Shelter
 4. Community & Sensory Gardens
 5. Parking
 6. Amphitheatre seating
 7. Pedestrian/cycle link to St George's Grove (subject to final TfL sign-off)
 8. Pedestrian/cycle link to Streatham Cemetery (location to be finalised)
- Trim trail and spaces for informal sports
 - New trees, wildflower planting, pond areas to increase biodiversity



Community update

Sign up for arts workshops with Hospital Rooms



Arts and mental health charity Hospital Rooms has this week launched [its most ambitious project](#) to date in partnership with South West London and St George's Mental Health NHS Trust.

As part of the development of our two new mental health facilities at Springfield University Hospital (above), 20 major artworks have been commissioned to transform how the hospital wards are experienced by patients and service users.

Between January and June 2022, Hospital Rooms artists will lead more than 80 art workshops with patients and staff, which will go on to inform the artworks that are created for the new facilities. The project will forge a new path for mental health services, radically transforming how a mental health hospital can look and feel and making access to creative participation central to the culture of care at the Trust.

As part of the co-production process, artists will lead numerous imaginative and adventurous art workshops at Springfield Hospital, which are generously supported by art materials manufacturer Colart and Winsor and Newton. The programme will engage a wide spectrum of the community in a meaningful collaborative experience and ensure the new environments have an affinity with the people who encounter them.

Find out more about the programme and sign up [here](#)

Trust Quality Awards

In November the Trust applauded its staff and teams by announcing the winners of its 2021 Quality Awards. Held every year, the awards recognise the hard work and dedication of Trust staff, and reward them for the exceptional care they give to their patients and communities.

Staff who have embraced new ways of working to continue supporting patients during the pandemic, a peer worker who uses their own lived experience to help others, and frontline staff who embody the Trust's values were just some of those recognised.

There were 14 awards handed out to staff and teams. Award winners were presented with trophies and certificates in recognition of their excellence. This year the Trust received over 300 high quality nominations for teams and individuals – a 50% increase on last year.

Among the winners and nominees were the Trust's Master Developer STEP who was shortlisted for the Partnership and Co-Production Award and Associate Director of the Estate Modernisation Programme, Bruce Duncan, who won the Chief Executive's Corporate Leadership Award.



Bricklaying event marks '12 months to go'

In November 2021, staff from South West London and St George's took part in a special bricklaying event to celebrate 12 months to go until the opening of our two new mental health facilities that will be at the heart of the new 'Springfield Village'.

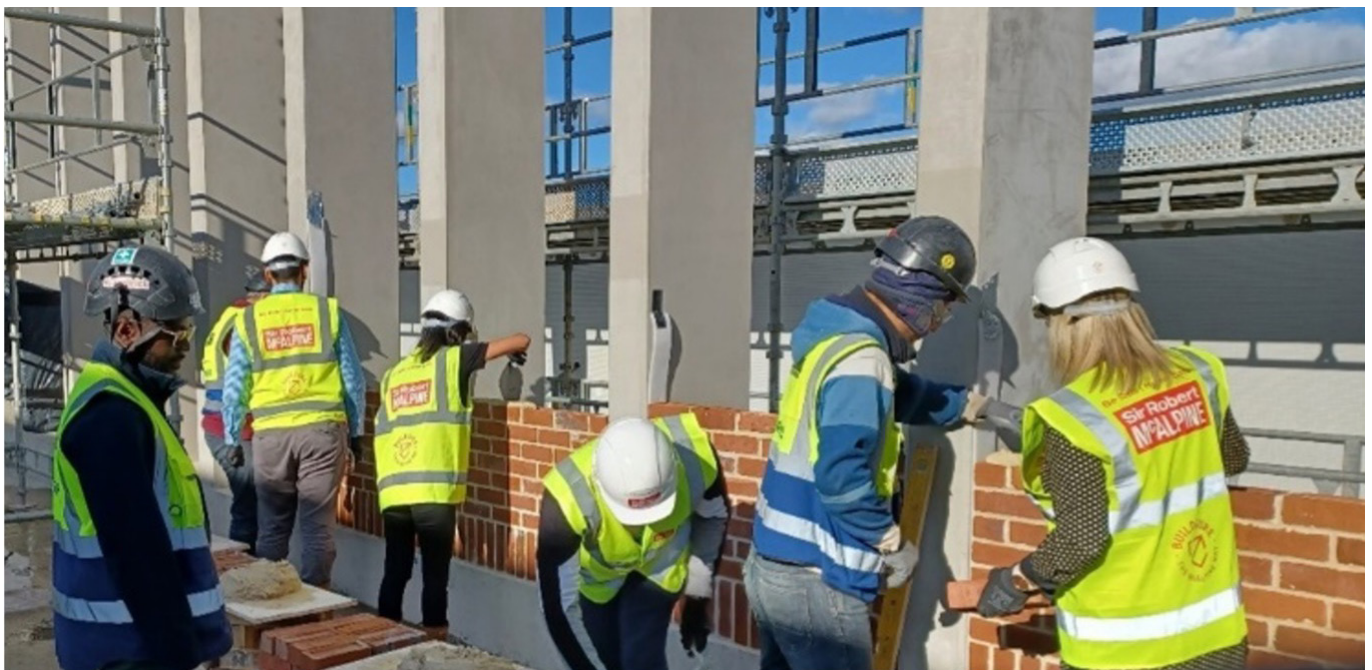
The 'Trinity' and 'Shaftesbury' buildings at Springfield are scheduled for completion in Autumn 2022, with the names for the buildings decided earlier in 2021 as part of a community naming competition won by members of the Trust pharmacy and Forensic teams.

Trust pharmacist Abz Salama, who took part in the event and chose the name Trinity, said, "It was a pleasure to lay some of the final bricks for our new mental health facilities

with our construction partners. I'm really looking forward to moving into our new home and we're excited about what this means not just for our teams, but for the care we deliver to our patients and service users."

Main contractor delivering the facilities, Sir Robert McApline, provided a short training session for Trust staff who helped to build one of the final facades of the Trinity building.

Alex Donnelly, Project Manager, Sir Robert McApline, said: "We are grateful to the NHS Staff at South West London and St George's for their participation in this bricklaying workshop, which was a great way to share the sense of pride we have in building these state of the art mental health facilities and our common goal to serve the local community."



Any questions? Contact us

To find out more information on the investments we are making in new mental health services across South West London, please contact us:

Email: estatemodernisation@swlstg.nhs.uk

Twitter: [@SWLSTG](https://twitter.com/SWLSTG)

Or visit our website: www.swlstg.nhs.uk/estate-modernisation

If you would like to receive a printed version of this newsletter or would like to become a distributor for your neighbours, please email estatemodernisation@swlstg.nhs.uk

Our partners

